

~ The Dawn of Gentle Times ~

“Early on the first day of the week, while it was still dark, Mary Magdalene came to the tomb and saw that the stone had been removed from the tomb .”

~John 20:1

Dear Members and Friends,

As I write these words, it's still just the fourth day of spring. I caught a glimpse of the season's first daffodils blooming in my yard today, standing in a broad circle and nodding their yellow heads at each other, as if agreeing on some secret plan. I imagine a farmwife in decades past planted them in a circle to surround the trunk of some long-gone tree. The sturdy tree is gone, but the tender daffodils remain, their hidden bulbs still making good on a promise they made long ago. The promise of those delicate, persistent flowers would have been hard to believe this past February, when an equally beautiful—but somehow less hopeful—veil of snow covered the earth for weeks. Resurrection! It's a routine occurrence that somehow manages to take us by surprise each time. With permission from the author, I'm sharing an Easter poem penned by our own former pastor, the Rev. Cal Wilson.

The Dawn of Gentle Times

Based on John 20:1, 11-18

The nightingale has sought her nest, the lark awakens to the rays;
Though dawn sheds light upon her breast, she sings the dark of recent days.
Amidst the nightshade 'round the tomb — the belladonna at her feet —
The Magdalene appears in gloom, bewails her love, now bittersweet.
There weeping, musing at the grave — the gaping mouth of night's abyss —
She bids farewell to fragile love and scorns the seal of death's sour kiss:
“From first the thought of gentle times — when in the throbbing waste of want
We sat and gathered grace sublime — I thought I could not carry on
'Til cease the ghosts of worlds that haunt and fade the face of loves undone.
Now lies the Thought of gentle times within the grasping clutch of death.
A dream unfurled, then brought to lime, you could not forge a cruel thought
Though Love expelled your final breath. Now where's the place for Love you taught?”
“Why weep?” rejoins the Risen Lord.
“Where have you laid him?” queries she.
“Mary!”
An empty tomb, the Risen Christ! Alleluia!
This morn the darkest dirge of rhymes will greet the Dawn of gentle times.
~The Rev. C. Coolidge Wilson

There's a new poignancy about the message of resurrection this year. The warmer temps and the accessibility of vaccines make the world feel more within reach than it has seemed for a long time. Please join us as we celebrate the mystery at the heart of our faith, and at the heart of all life: resurrection. Where do you see it in your life?

In Christ's Peace,

~Brian

Christian Education and Youth Programming -- Amy Grella, Director

SEEKING INPUT ON CHILDREN'S PROGRAMMING CHANGES AS THE CHURCH RE-OPENS

The CE committee is seeking feedback from families in the form of a survey to better gauge families' needs as we return to in-person worship. Please be on the lookout for an email from Amy to the survey link. Your prompt response will be greatly appreciated as it will help inform decisions.



CHILDREN'S WORSHIP PRESCHOOL THROUGH GRADE 2

Children's worship stories continue to be pre-recorded and posted weekly on the church website, and families may retrieve supply bags with materials to complete the crafts described each week. Please contact Amy if you did not receive yours or need additional materials.

We will continue to host monthly live Zoom meetups for preschool through 2nd grade. Our next meetup is scheduled for Sunday, March 28. Information to join will be shared via email a few days beforehand.

AN UPDATE ON JUNIOR DAY CAMP AND DAY CAMP

The Christian Education committee has decided that we will not plan for our traditional week-long day camp and junior day camp this summer. Instead, we plan to host shorter, all-outdoor meetups throughout the summer. We believe this will be easier to plan and will allow us to adapt to the latest information to maintain safety for all participants and volunteers. If you would like to be involved in planning, please contact Amy or the church office.

TWEEN AND PRE-TEEN PROGRAMMING THIRD THROUGH EIGHTH GRADE

Our combined class for kids in 3rd - 8th grade will continue live Zoom meetups on Sunday mornings at 9:30 a.m. Lessons will be based off of the Sparkhouse curriculum, *Whirl All Kids*. Check your email for the Zoom meeting link.

SENIOR HIGH YOUTH GROUP UPDATES

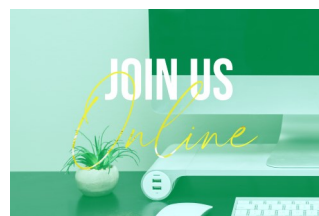
FELLOWSHIP FIRE PIT

The youth group will conclude its Lenten fire pits gathering next to the church playground on Sunday, March 28, from 7:00-8:00 p.m. Be sure to wear your masks and bring your own chair if you want to sit around the fire. Please check your GroupMe texts and emails to stay up-to-date on our plans.

SPRING PLANT SALE COMING SOON

Bower Hill Youth Group will be selling spring plants to raise funds for the outdoor seating area space being built and our summer mission trip. Order deadline will be mid-April, with delivery the week before Mother's Day. Full details will be shared in the next week.

ADULT EDUCATION RETURNING TO SATURDAYS



As BHCC returns to a combination of in-person and streaming worship services beginning at 9:30 a.m. on March 28, it will be difficult to hold an Adult Education Zoom program at 11:00 a.m. the same morning. Being mindful of potential conflicts, the Adult Education programming via Zoom will move back to Saturdays from 9:00-10:00 a.m. until it is OK to meet in person once again.

There will be no Adult Education on Easter Sunday, but it will resume on April 10 and beyond. Future programming details and Zoom links will be announced in upcoming E-blasts. We hope you will make a plan to join us!

--Sarah Neusius and Rick Jacobs
Co-Chairs, Adult Education

**April 1****Maundy Thursday**

There will be a service via Zoom
at 7:30 p.m.

April 2**Good Friday**

The church is open for private prayer
from 9:00 a.m. to 3:00 p.m.

April 3**Holy Saturday**

Please observe this day in prayer.

April 4**Easter Day -- In-person
Communion**

Bring bread and wine/juice
for you and your family.

I Corinthians 15:1-10A; John 20:1-18

A joyous celebration of resurrection
will take place both in person
and via livestreaming!

***Worship Plans
for April*****April 11**

2nd Sunday of Easter -- In-person
Acts 4:32-35; John 20:19-31

April 18

3rd Sunday of Easter -- In-person
1 John 3:1-7; Luke 24:36b-48

April 25

4th Sunday of Easter
1 John 3:16-24; John 10:11-18

**Mission Project to Support
Global Links and Partners**

In addition to providing surplus health supplies to poor communities in the Western Hemisphere, Global Links also supports local safety-net organizations serving vulnerable people. This year, [Global Links](#) has launched a "Personal Care Kits" project, with the goal of donating 21,000 kits to give to local nonprofit social service safety-net partners, including shelters, free clinics, childcare centers, charitable and free clinics, and senior facilities. As the COVID pandemic continues, these essential health items are being provided to individuals and families struggling financially. Such items are not covered by SNAP and other government assistance programs, so they are often items that people must go without, yet are essential to their health and well-being.

Bower Hill has chosen to help. We will gather items donated by members and friends to make up the kits, with the goal of initially creating **250 personal care kits** to donate to Global Links who will distribute them locally. Each kit must include one of each of the following items. **All items should be NEW and FULL SIZED -- no travel or extra-large size please.** We are seeking donations of the following items only. No extra things are to be included in the kits. Where possible, please choose gender-neutral, fragrance-free items with less chemicals.

Shampoo

Bar of soap

Toothbrush

(if you have a multi-pack, do not open or separate)

Toothpaste

Dental floss

Moisturizer/Lotion

Deodorant

The youth of the church will assist in assembling the kits.

Please open the link below to sign up for what you would like to contribute.

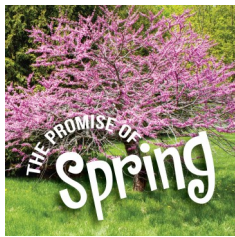
[Mission - Global Links | BowerHillChurch](#)

OR type the following address directly into your web browser:
www.bowerhillchurch.org/mission-global-links.

Please bring your contributions either to the bin outside the church office or the bin outside the Sanctuary on or before Sunday, APRIL 11. We hope to assemble the kits on Sunday, April 18.

Thank you for joining us in this exciting project!

PASTORAL PONDERINGS



The old old saying is “April showers bring May flowers”. Now, I don’t pretend for a moment to be a gardener. The only thing I buy in the garden section is pots to put things in that are already mature. However, in this post-Easter season, it is deemed to be a season to celebrate new life.

During the pandemic, it has been difficult to celebrate Spring as it has been in the past. Last year, we were locked down and perhaps did not get to witness first-hand the blooming plants, the longer days, and the warmer weather. Hopefully, this year will grant us more freedom to experience the new birth that accompanies our spring and summer months.

For the church, there has also been an absence of celebration in experiencing the joy of fellowship and a robust resurrection season. However, this should not stop us from experiencing a personal renewal. We are to become new creatures in the spirit of the Christ. We must celebrate our renewal in the affirmation of the Easter experience of resurrection and new beginnings in the knowledge of redemption. May it be so with all of us!

Rev. Dr. Fred Leasure, Parish Associate



COLLECTION ONGOING

Flea Market items can be dropped off from Monday through Friday inside the Portico door (the area right outside the office). Please call ahead to be sure that someone is in the office during business hours (9:00 a.m. – 3:00 p.m.). Watch for future E-blasts about special collection dates (mostly Saturdays).

Please do not include clothes or old TVs. All items must be clean and in working condition. Please contact Theresa Child at treetoowon@yahoo.com or at 412-429-9519 if you have any questions.



LIGHTING THE STEEPLE

April 3

In observance of Andrew Sykes on his birthday, from his mother, Betty Sykes.

April 22

In memory of Betty B. Mancini on the one year anniversary of her passing, Earth Day, by her family: Ann Morrison & Bob Hendricks, and Rick & Andrea Morrison.

EVERY DAY in 2021

In prayer for World Peace, from Susan Hill Brown, former member of BHCC

The opportunity to light the steeple of Bower Hill Community Church continues to be successful. Many have sponsored a night in memory or in honor of a person or a special occasion. Notice of the lighting and the person, event, or date that it commemorates, will appear in the weekly bulletin. The cost of this is \$10 a day and can be sent directly to the church.

Requests should include: 1) the date(s) you would like to sponsor; 2) the reason you want to sponsor (in honor, in memory, etc.); 3) the name of the person(s) or the event as you want it to appear in the bulletin; 4) your name. Email your request to: Amy Leasure at amlea97@hotmail.com.

APRIL



- April 4 -- Elise Gibbs
- April 6 -- Mark Mezyk
- April 7 -- Christie Cole
- April 11 -- Theresa Child
-- Scott Ryfun
- April 13 -- Mimi Starr
- April 16 -- Charlotte Young
- April 20 -- Theodore Grier
- April 21 -- Bea Watterson
- April 22 -- Owen Geis
- April 23 -- Kirsten Bruder
- April 24 -- Margaret Zabo
- April 25 -- Benjamin Carter
-- Alan Hohlfelder
- April 26 -- Barb Hughes
- April 27 -- Ed Hanke
- April 29 -- Clara Druckenbrod

THE BIRTHDAY BLESSING

Please take a moment to read through the names, pray for them, and offer them your best wishes. If your name is not listed, it is because the church office does not have your information. Please call 412-561-4114 or email office@bhccml.com.

FROM THE ECO-JUSTICE TEAM

How are you all doing with the plastic challenge? This is being written in mid-March, so you've still got time! If you have any triumphs or observations you'd like to share, the Eco-Justice Committee is eager to hear them. Contact the office, or email sdboisvert@gmail.com. Every little bit helps!

Another thing we can do to join the world-wide effort to reduce global warming is to pay attention to food waste. It is estimated that more than 1/3 of all food grown for human consumption in this country is wasted, and most of that goes into a landfill rather than becoming compost. Susan Miller-Davis, a principal in the food and consulting firm Infinite Table, has some suggestions for all of us. Shop with a list, and only buy the ingredients you are most likely to use. Some people use tactics such as making a list of what's in the refrigerator; dating purchases; or moving the oldest food to the top shelf; and buying local whenever possible, in order to get the freshest produce. Rather than cooking what you're in the mood for, open your refrigerator and think about what needs to be cooked. Support organizations like 412 Food Rescue, which redirects food waste from restaurants and institutions to organizations serving the hungry. Reducing food waste is one of those climate solutions that costs almost nothing while providing both financial and environmental benefits.

Earth Day was established 51 years ago, and continues to be widely celebrated. This year, Earth Day Mt. Lebanon will sponsor a local celebration. More information will be forthcoming in April, but for now they are planning activities you can do on your own. Much information will be available through a story board. To follow developments, follow their Facebook page, <https://www.facebook.com/Earth-Day-in-Mt-Lebanon-135088833224133>



As our thoughts turn to spring and our gardens, many of us are exploring how to incorporate native plants and pollinators into our yards. Below are two resources for locating native plants that are not invasive and will support pollinators more effectively. Enjoy!

[Native Plant Sources - PA Native Plant Society](#)

[Where to Buy Native Plants - PA Department of Conservation and Natural Resources](#)

WESTERN PA DIAPER BANK

Tax-deductible monetary donations are accepted by making your check payable to **Western Pennsylvania Diaper Bank and mailing it to 201 N. Braddock Ave., Suite 124, Pittsburgh, PA 15208**. Please note our church name in the memo line.

Remember to save coupons for disposable diapers and feminine hygiene products that you collect. You can drop them off at the church office during regular business hours OR you can mail them with your weekly offering.

**BHCC Information**

Rev. Dr. Brian Snyder, Pastor

Parish Associate, Rev. Dr. Fred Leasure

Company of Pastors

Rev. Tami Hooker

Rev. Phil Jamison

Rev. Dr. Fred Leasure

Rev. Dr. Betty Sykes

Amy Grella, Director

Christian Education and Youth Programs

Anne Smith

Director of Music Ministries

Philip Engel

Financial Secretary

Karen Reynolds

Office Administrator

THE CHURCH OFFICE

70 Moffett St., Pittsburgh, PA 15243

(412) 561-4114

office@bhccml.com

Monday - Friday, 9:00 a.m.— 3:00 p.m.

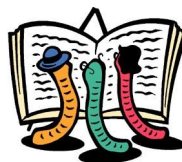
www.BowerHillChurch.org

UNITY FOOD PANTRY COLLECTION

Bower Hill Church is collecting again for the Unity Food Pantry. The collection date will be the second Sunday of each month which, for this month, is April 11. Items can be brought to the church and placed in the collection bin located in the hallway outside the church office. If you're unable to bring items on the announced date, feel free to drop them off anytime the church is open.



Currently, the Pantry's greatest need is for boxed cereal--preferably low sugar varieties--as well as for feminine hygiene products of all types. Donations of any non-perishable food items are always welcomed, as well.

**BOOKWORMS**

The group continues to meet on the fourth Tuesday of the month at 1:00 p.m., via Zoom.

April 27 - *Transcendent Kingdom*, by Yaa Gyasi
May 25 - *The German Girl*, Armando Lucas Correa

UPCOMING DEADLINE

Article submissions for the **May newsletter** are due into the church office by April 16.

BHCC CARE LIST

Jeff Carper, Jean Dunfee, Dennis Geis, Sr.,

Nancy Green, Jim McAnulty,

Barbara Oram, Donna Williams

LuAnne Pattison, former member

